

m905 IR Option Install Guide **For m905 serials # 905001 - 905294**

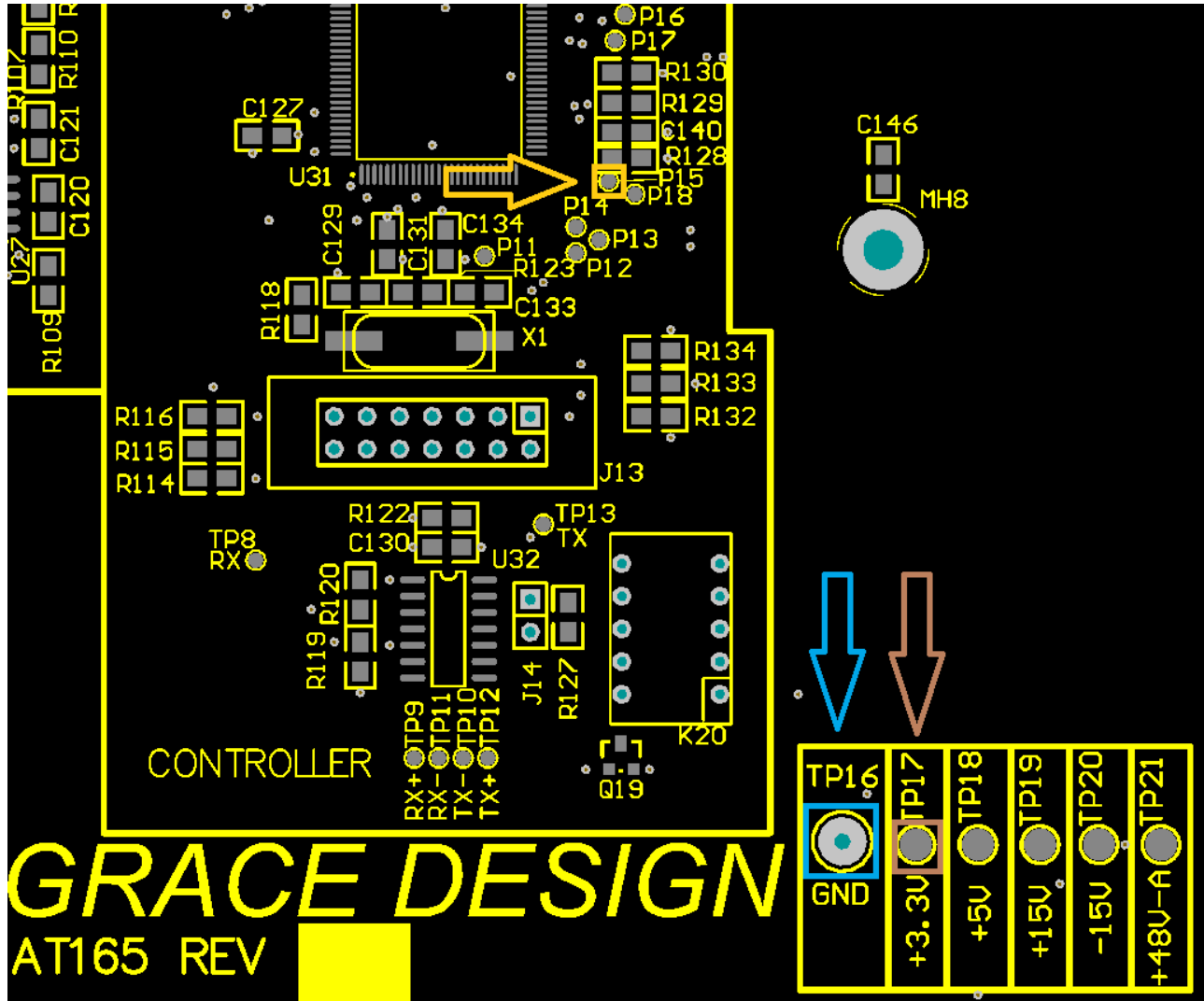
TOOLS

#2 Phillips Screwdriver
1/16" Allen Driver
Small Phillips or Flat Head Screwdriver
Tweezers or Needle Nose Pliers
Soldering Iron and Solder

PROCEDURE

1. Remove the m905 top cover by unscrewing 8x #2 Phillips screws. There are 4 screws on top and 2 on each side.
2. Disconnect the headphone jack by using a small Phillips or flat head screwdriver to unscrew each wire terminal, then pull the wires free.
3. Disconnect the AC power switch by using tweezers, needle nose pliers, or your fingers to pull the 2 brown wires and 2 blue wires off. Leave the center red and white cables connected to the switch and disconnect the header from the main board.
4. Remove the AC power switch from the front panel by pushing it out from the back.
5. Remove the front panel by unscrewing 8x 1/16" Allen head screws.
6. Install the new IR front panel by screwing in 8x 1/16" Allen head screws.

7. Solder the brown wire to TP17 +3.3V, orange wire to P15, and blue wire to TP16 GND.



8. Connect the headphone jack by placing the green wire in the HP GND terminal, black or clear wire in the HP left terminal, and the red wire in the HP right terminal. Use a small Phillips or flat head screwdriver to tighten the terminals down on the wire.
9. Install the AC power switch in to the front panel by pressing it in from the front, then connect the brown pair to the terminals marked N.O. and COM on one bank, and the blue pair to the same terminals on the other bank. Connect the LED wire harness to the header on the main board.
10. Re-install the top cover with 8x #2 Phillips screws.
11. Update your unit to the latest firmware.

This concludes the m905 IR option install procedure!