

m908

Firmware Update Procedure

1. Download the latest m908 firmware package from the link above. The firmware package will be named: m908_xx_xx_xx.pkg where the xx is the firmware version information.
2. Copy the .pkg file to an empty USB flash drive formatted FAT or FAT32. Be sure that there is only one .pkg file on the USB drive.
3. Turn off power to m908
4. Insert USB drive in to USB HOST connector on the back panel of the m908.
5. Power on the m908 and wait for the prompt. Once the system has booted, it will identify the new firmware package and provide the following dialog box:

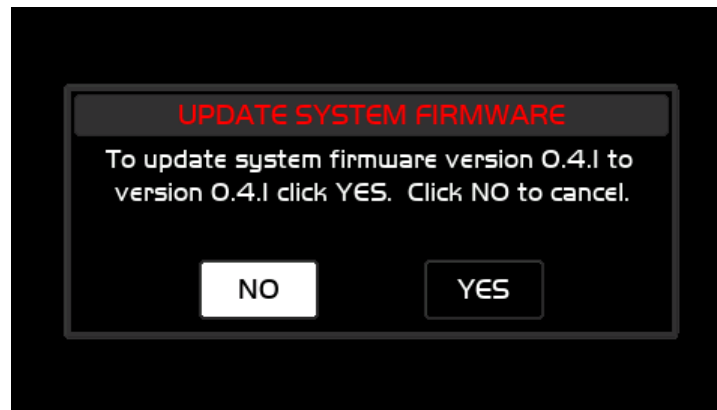


Illustration 1: Update System Firmware Dialog

6. In this message the current ACU firmware version is displayed along with the new firmware version. Selecting "NO" will cancel the firmware update and the system will boot normally. Selecting "YES" will begin the ACU firmware update. The following message will be displayed while the ACU firmware is being installed:



Illustration 2: ACU Firmware Updating Message

7. DO NOT DISRUPT SYSTEM POWER DURING THIS PROCESS!
8. Once the ACU firmware update is complete, the system will provide the following dialog box if the current RCU firmware version and new version are different. If the versions are the same, this message will be bypassed.

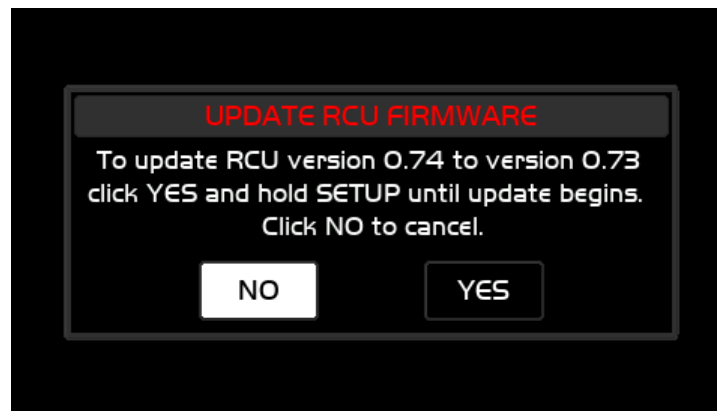


Illustration 3: Update RCU Firmware Dialog

9. In this message the current RCU firmware version is displayed along with the new firmware version. Selecting "NO" will bypass the RCU firmware update process. (The user will be prompted each time the system powers up until the RCU firmware version matches the version included with the installed ACU package.) Selecting "YES" will restart the RCU. To enter the RCU firmware updater, the SETUP button must be held until the LED boot sequence has completed. Once this happens, the m908 RCU bootloader will show up on the LCD. At this point you can release the SETUP button. The RCU firmware update will take 5-10 minutes.

Once it completes, the RCU will reboot and the system will display the following message indicating the new ACU firmware has been installed successfully:

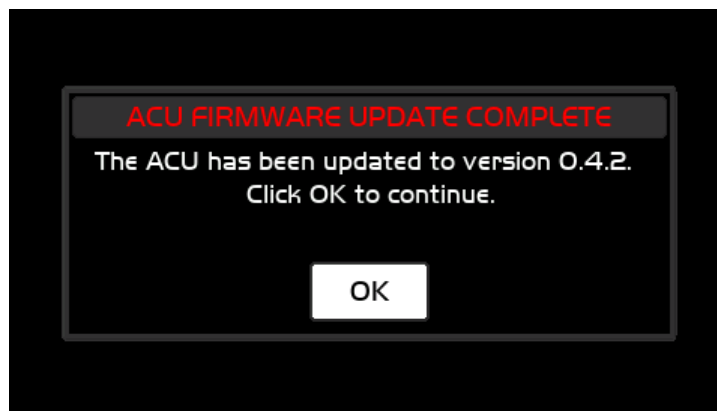


Illustration 4: ACU Firmware Update Complete

10. Click OK to resume booting to normal operation.
11. Power the m908 off and remove the USB drive.
12. Power the m908 on.

Manual Revision History			
Rev.	Description	Date	Initials
A	Initial Release	11/8/2019	MBG